

Security Huts Range



- Stock item - fast turnaround
- Fitted with electrics as standard
- 4no. windows for 360° vision
- Robust steel construction

Our standard Security Huts are a range of small steel units ideal for use as Security Huts, Guardhouses, Ticket Kiosks and many more applications.

Security Huts are a complete Steel construction, with a flat-sided steel external finish, painted with a high grade external paint. This provides a very durable and low maintenance finish at a very competitive price.



8ft x 6ft Hut Interior



450w Coldwatch Heater



6ft x 4ft & 4ft x 4ft Internals

Security Huts - Technical Specifications

Design

Our Security Hut range are fully finished buildings that are pre-fabricated, factory built units fitted with electrics, lighting and heating as standard. When delivered to site these units are immediately ready for use.

Structurally designed with reference to the following standards:

- BS449 Part 2 Structural Use of Steelwork in Building
- BS5268 Part 2 Structural Use of Timber
- CP3 Chap V Part 2 Wind Loads
- BS6399 Part 1 1984 Design Loads for Buildings

Manufactured under strict factory conditions and welded in accordance with BS 5135 : 1984 Process of arc welding of carbon and carbon manganese steels.

External Walls

The external steel walls are manufactured from HR4 1.6mm mild steel panels with a flat sided finish. Painted with a one coat anti-corrosive high build mid gloss paint finish in Goosewing Grey BS 10.A.05. This finish achieves a class '0' spread of flame.

Bespoke versions available in any BS or RAL colours of choice.

Internal Walls

12.5mm Vinyl faced plasterboard (white), jointed by means of 2 part PVC 'H' section trims, fixed to 45x35mm timber studs, giving a class '0' spread of flame rating to BS1230. 60mm glass fibre insulation will be fitted within the wall cavity. (Alternative linings and insulation are optional).

Roof

Roof constructed 1.6mm HR4 mild steel panels supported by 75mm x 50mm x 3mm roof spars with a perimeter 'J' section gutter of 3mm mild steel with paint finish. Softwood ceiling joists infilled with 60mm glass fibre insulation, underdrawn with vinyl faced plasterboard (white) and jointed by means of PVC 'H' section trims. Vinyl faced plasterboard provides a class 0 spread of flame rating to BS1230.

Windows

3no. 914 x 914mm aluminium framed double glazed sliding windows (with 4mm clear glazing).

Floors

15mm exterior grade plywood decking screwed to 100 x 50 x 3mm RHS Floor Joists (BS EN 10025 : S275), corner base floor plates slotted. Finished with a 2mm Vinyl Polyfloor XL (Graphite) with fully welded seams.

Doors

Steel composite doors c/w vision panel are fitted as standard.

Electrical Installation

- Fitted as standard with 1no. 13 amp twin switched socket outlet.
- 1no. 2D bulkhead light fitting.
- 1no. 450w Coldwatch heater fitted to 6ft x 4ft and 6ft x 6ft units, 8ft x 6ft unit fitted with a 2kw convector heater.
- The whole installation is fitted with RCD & MCB protection from the Mains Distribution Board which is fitted at high level adjacent to the door and fully complies with the current IEE Regulations.

Standard Sizes

Security Huts are manufactured in 3 standard sizes and are kept in stock ready for immediate despatch, painted in Goosewing Grey (BS 10.A.05).

- SH634 - 6ft x 4ft (1.2m x 1.8m approx.)*
- SH636 - 6ft x 6ft (1.8m x 1.8m approx.)*
- SH836 - 8ft x 6ft (2.4m x 1.8m approx.)*

Bespoke Options

Our Security Huts range can be bespoke built to order with specific layouts and colours if required. Please contact us for prices and further details.

Variations from this 'Standard' specification for specific units will be noted in our quotations for same.

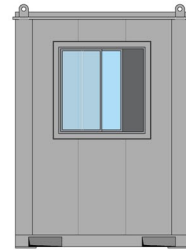
Due to the company's policy for continuous improvement to its product range, we reserve the right to change and/or alter specifications without prior notice. Clients will of course be notified accordingly.

Revised - 01.07.18

Security Hut Drawings - SH636 (6ft x 6ft)

do not scale from drawing

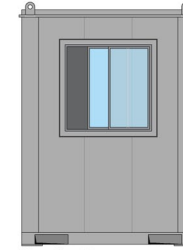
Tolerances: +/- 2mm
Timber Framing: 45mm
Module Weight: 1210kg
Laden Weight: 1880kg
Max Lift Weight: 1880kg



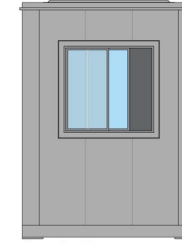
Elevation A



Elevation B



Elevation C



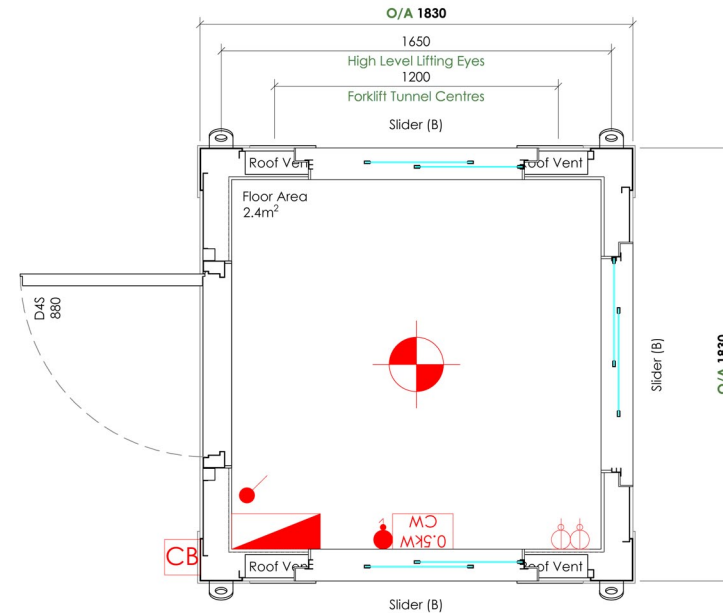
Elevation D

Technical Details

880mm Steel Security Door c/w 480x480mm vision panel
914x914mm Aluminium Double Glazed Sliding Windows
(windows @ 980mm AFFL)
1.6mm Flat Steel wall panels
Painted externally in Goosewing Grey BS.10A05
High level lifting points
Forklift Pockets
2232mm Internal Ceiling Height
60mm Insulation to walls & roof
Walls & ceiling lined with vinyl faced plasterboard (white)
Plastic skirting, trims, architrave etc. (white)
2mm Wluded Vinyl Floor (Graphite Grey)

Electrical Key

Distribution Board 17th Edition
Galvanised Connection Box
2D Bulkhead Light
0.5kW Cold Watch Heater
Double Sockets @ 500mm affl
Light Switch

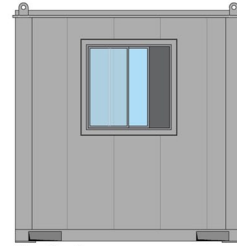




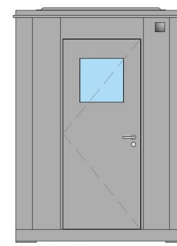
Security Hut Drawings - SH836 (8ft x 6ft)

do not scale from drawing

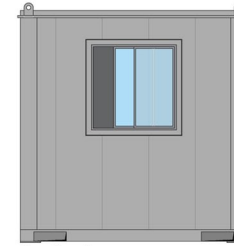
Tolerances: +/- 2mm
 Timber Framing: 45mm
 Module Weight: 1210kg
 Laden Weight: 1880kg
 Max Lift Weight: 1880kg



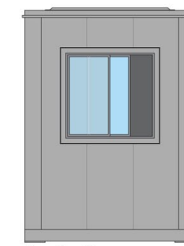
Elevation A



Elevation B



Elevation C



Elevation D

Technical Details

880mm Steel Security Door c/w 480x480mm vision panel
 914x914mm Aluminium Double Glazed Sliding Windows
 (windows @ 980mm AFFL)
 1.6mm Flat Steel wall panels
 Painted externally in Goosewing Grey BS.10A05
 High level lifting points
 Forklift Pockets
 2232mm Internal Ceiling Height
 60mm Insulation to walls & roof
 Walls & ceiling lined with vinyl faced plasterboard (white)
 Plastic skirting, trims, architrave etc. (white)
 2mm Wloded Vinyl Floor (Graphite Grey)

Electrical Key

Distribution Board 17th Edition
 Galvanised Connection Box
 2D Bulkhead Light
 2kW Convector Heater
 Double Sockets @ 500mm affl
 Light Switch

